

# Vcheck M FIV/FeLV

Sample-In, Result-Out:  
One-Step Diagnostic solution for FIV and FeLV



# Feline Immunodeficiency Virus (FIV) / Feline Leukemia Virus (FeLV)

FeLV and FIV infections are widespread in cats around the world, leading to various clinical signs and potentially influencing both the quality of life and lifespan of infected cats.

## What is FIV & FeLV

	FIV	FeLV
<b>Pathogen</b>	Retroviridae, Lentivirus	Retroviridae, Gammaretrovirus
<b>Transmission</b>	saliva or blood	Primarily by saliva (nasal, milk, urine and feces)
<b>Pathogenesis</b>	<pre> graph TD     A[FIV exposure] --&gt; B[Acute phase]     B -- Clinically healthy --&gt; C[Asymptomatic phase]     C -.-&gt; D[Terminal phase]     D --&gt; E[FIV-related disease]             </pre>	<pre> graph TD     A[FeLV exposure] -- Strong immune --&gt; B[Abortive infection]     A -- Good immune --&gt; C[Regressive infection]     A -- Variable immune --&gt; D[Focal infection]     A -- Poor immune --&gt; E[Progressive infection]     E --&gt; F[FeLV-related disease]             </pre>
<b>Clinical problems that could be associated with the infection</b>	<ul style="list-style-type: none"> <li>• Neoplasia (lymphoma, leukemia, etc.)</li> <li>• Bone marrow disease</li> <li>• Secondary infection due to immunosuppression</li> <li>• Neurological signs</li> <li>• Immune mediated disease</li> </ul>	<ul style="list-style-type: none"> <li>• Neoplasia (lymphoma, leukemia, etc.)</li> <li>• Bone marrow suppression (anemia, pancytopenia, etc.)</li> <li>• Secondary infection due to immunosuppression</li> <li>• Neurological signs</li> <li>• Fading kitten syndrome</li> <li>• Immune mediated disease</li> </ul>
<b>Prevalence (differ from regions)</b>	5 ~ 14 % (FIV antibody prevalence)	4 ~ 14% (FeLV antigen prevalence)

\* Reference : 2020 AAFP Feline Retrovirus Testing and Management Guidelines

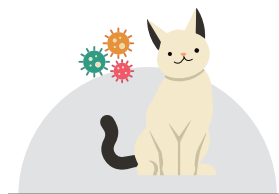
## When to test FIV & FeLV ?



When first adopted



Prior to initial vaccination



Potential exposure to infected cats

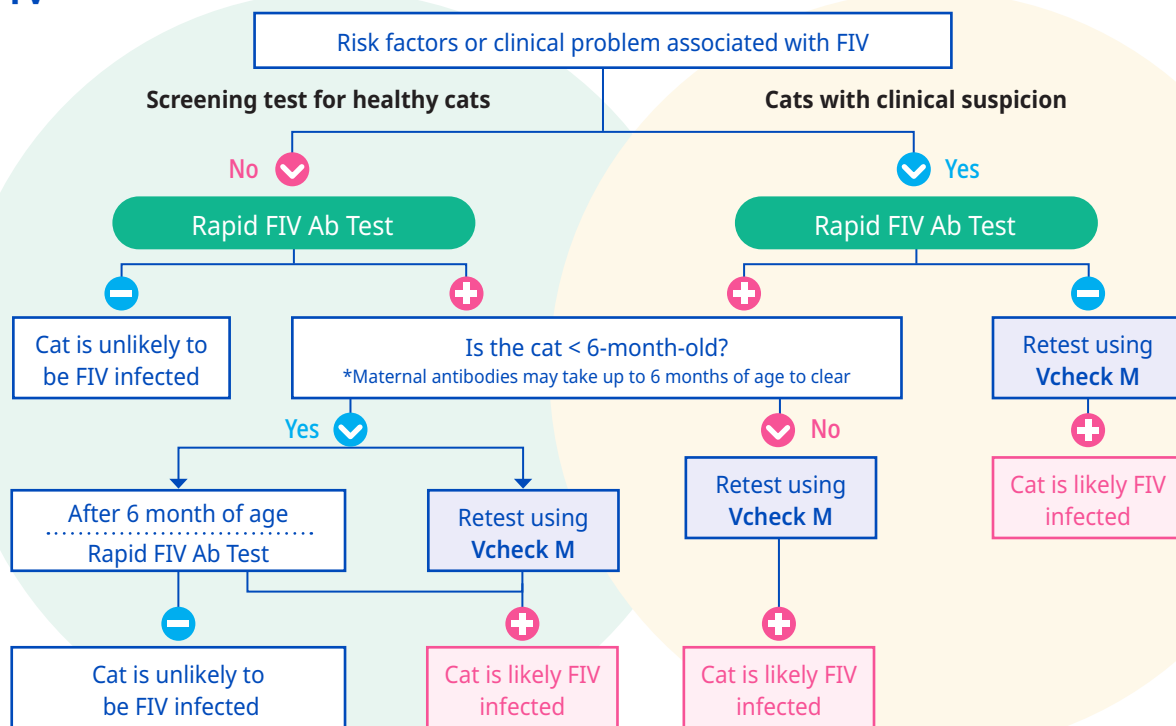


Clinical signs are displayed

\* Reference : Infectious Disease of the dog and cat 4th ed.(Greene)

# Diagnostic Algorithm

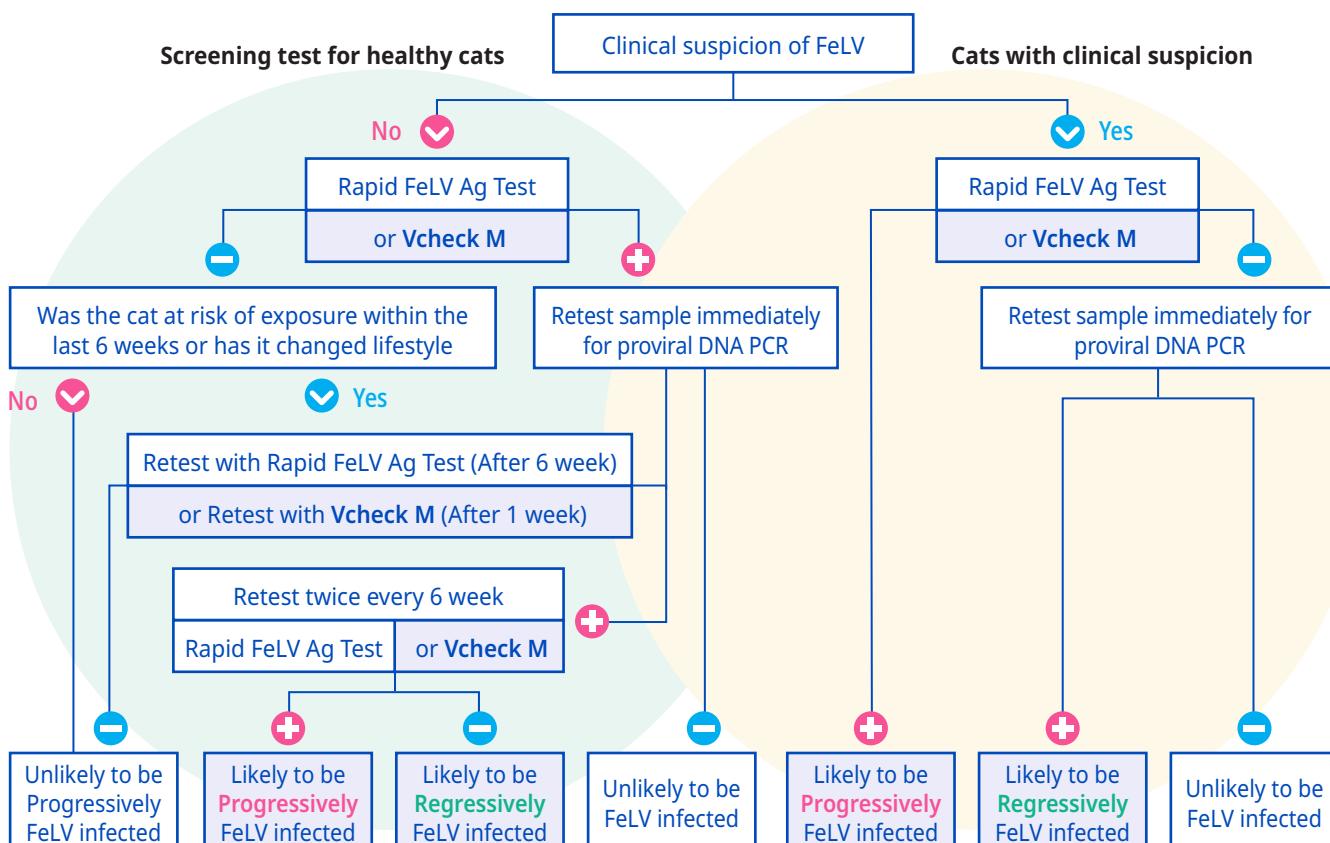
## FIV



\* Reference : ABCD FIV diagnostic tool

\* Note that PCR is used to confirm (but not exclude) infection.

## FelV



\* Reference : ABCD FeLV diagnostic tool

\* Note that PCR is used to confirm (but not exclude) infection.

# Vcheck M FIV/FelV

## Specification

**Detection Target** : Feline Immunodeficiency Virus (FIV)  
Feline Leukemia Virus (FeLV)

**Species** : Feline

**Sample Type** : Whole blood (EDTA) 100 µl

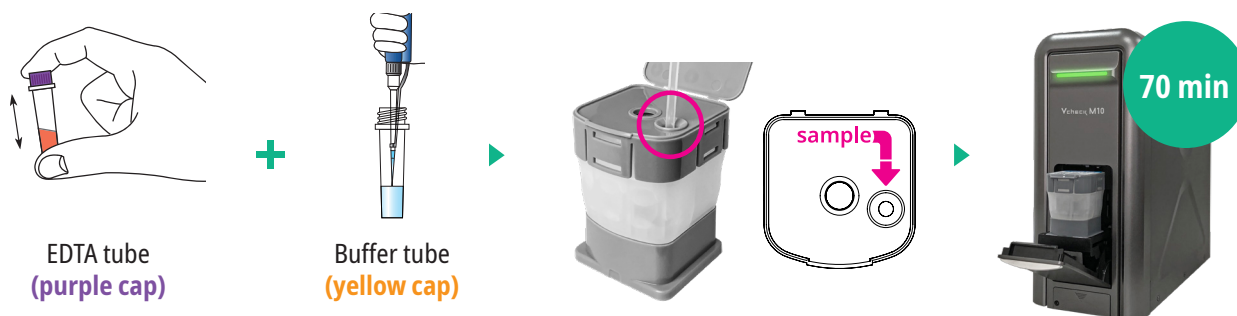
**Testing Time** : 70 minutes

**Shelf Life** : 12 months



## Test Procedure

- 1 Take 100 µl whole blood
- 2 Mix with buffer (500 µl)
- 3 Inject 600 µl sample mixture
- 4 Insert the cartridge



## Result interpretation

Result	FIV	FeLV	Internal Control
FIV/FeLV Positive	+	+	✓
FIV Positive	+	-	✓
FeLV Positive	-	+	✓
FIV/FeLV Negative	-	-	✓
Invalid / Re-Test	!	-	!

## Limit of Detection

- Feline Immunodeficiency Virus :  $1.4 \times 10^3$  copies/mL
- Feline Leukemia Virus :  $1.4 \times 10^3$  copies/mL

## Ordering Information

Product No.	Product Name	Operating Condition	Packing Unit
VCM109AC	Vcheck M FIV/FeLV	2 ~ 28 °C	5 Tests/Kit



Manufactured by

BIONOTE, Inc.

22, Samsung 1-ro 4-gil, Hwaseong-si, Gyeonggi-do, 18449, Republic of Korea  
TEL: 82-31-211-0516 | FAX: 82-31-8003-0618 | [www.bionote.co.kr](http://www.bionote.co.kr)